

K1M35S2

module • linear

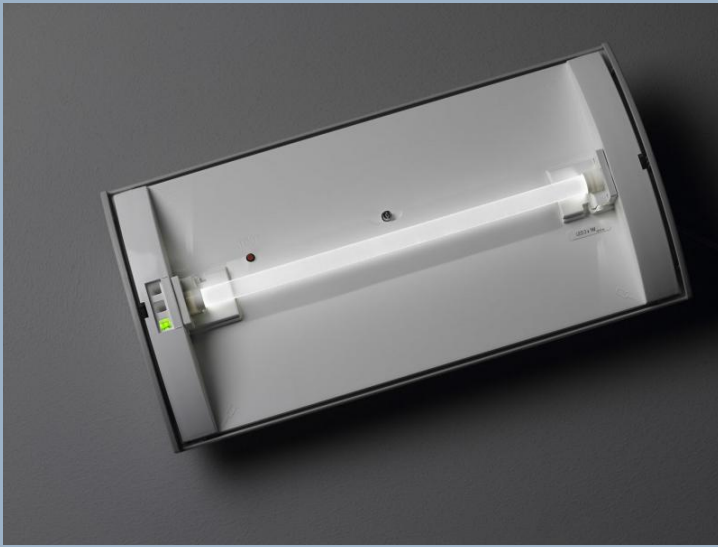
application : Office, Healthcare, Education, Horeca, Retail, Leisure, Industry, Logistics, Sport

light source : LED LP

function: single-sided signage

self test: ESM wireless 868 MHz

photobiological safety: EN 62471: RISK GROUP 0 UNLIMITED



Product information

Mechanical properties

Electrical properties

voltage: 220-230V

frequency : 50-60Hz AC

Battery

Battery: 4 x NiMh 1,2V 1,1Ah

autonomy : 180 minutes

