

V3RS10M/N6M0D0X2

surface-mounted luminaire • linear

housing: lacquered aluminium

light source: low power LED • 4000 K

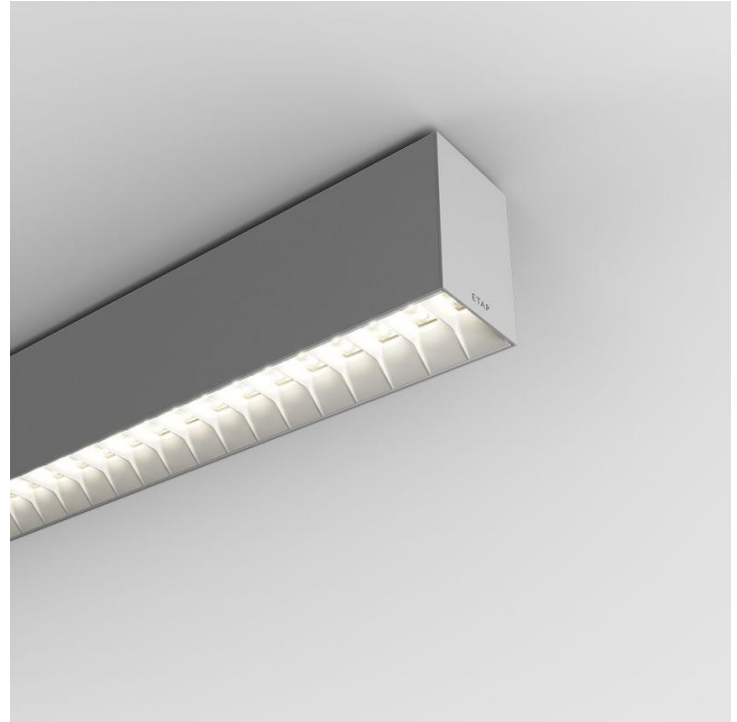
optics: Shielded lens • White polycarbonate (PC) • medium wide-angle

UGR classification: <=19

luminous flux: 5650 lm

luminous efficacy: 144 lm/W

LLMF: 96% @ 50khrs (Tq=25°C)



Mechanical properties

dimensions: 2739 mm x 60 mm x 90 mm

colour: RAL9006 - white aluminium (textured)

type: individual luminaire

IP: IP20

Electrical properties

driver: DALI dimmable

power: 39.2 W

voltage: 220-240V

frequency: 50-60Hz AC

photobiological safety: EN 62471: RISK GROUP 1 UNLIMITED

V3RS10M/N6M0D0X2

Luminance

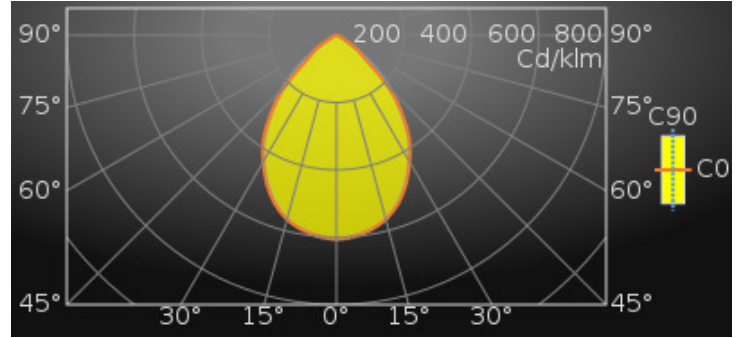
luminous flux : 5650 lm

luminous efficacy : 144 lm/W

luminance @ 65° : 3000 cd/m²

UGR classification: <=19

luminous area : 0.15 m²



Average Luminances (Cd/m²) for 5650lm

| Gamma | C0 | C30 | C45 | C60 | C90 |
|-------|-------|-------|-------|-------|-------|
| 45° | 11555 | 13515 | 14319 | 13502 | 11784 |
| 50° | 6652 | 10794 | 11776 | 11212 | 9243 |
| 55° | 4921 | 6420 | 9077 | 8631 | 5441 |
| 60° | 2126 | 4491 | 5489 | 4611 | 2746 |
| 65° | 944 | 1662 | 2903 | 2337 | 2103 |
| 70° | 656 | 798 | 1075 | 1513 | 1461 |
| 75° | 511 | 566 | 685 | 919 | 1174 |
| 80° | 345 | 426 | 482 | 594 | 986 |
| 85° | 1 | 5 | 58 | 259 | 698 |

Classifications

CIE: 709 / 966 / 997 / 1000 / 1000

CIE FLUXCODE : 0.71 / 0.97 / 1.00 / 1.00 / 1.00

BZ: BZ2

CAE: Symmetrical

DIN: A60 (Nach Arbeitsblatt 7)

DIN_U: Phi u = 1.00

DIN_SU: Phi su = 0.71

UTE: 1.00 C + 0.00 T

V3RS10M/N6M0D0X2

Luminous intensities in cd

Lifetime Data (Tq=25.0°C)

| Time(khrs) | LLMF(%) | Cx(%) |
|------------|---------|-------|
| 10 | 99 | 2 |
| 20 | 99 | 4 |
| 30 | 98 | 6 |
| 40 | 98 | 8 |
| 50 | 97 | 10 |
| 60 | 96 | 12 |

Intensity for 5650lm

| Gamma | C0 | C45 | C90 |
|-------|--------|--------|--------|
| 0° | 3419.5 | 3419.5 | 3419.5 |
| 5° | 3383.6 | 3384.6 | 3396.3 |
| 10° | 3313.0 | 3302.9 | 3306.6 |
| 15° | 3197.5 | 3192.0 | 3184.8 |
| 20° | 3010.9 | 3027.0 | 2977.2 |
| 25° | 2757.7 | 2810.8 | 2709.4 |
| 30° | 2444.5 | 2543.2 | 2414.2 |
| 35° | 2125.6 | 2242.4 | 2067.3 |
| 40° | 1699.0 | 1925.5 | 1662.3 |
| 45° | 1251.9 | 1551.3 | 1276.7 |
| 50° | 655.1 | 1159.7 | 910.3 |
| 55° | 432.5 | 797.7 | 478.2 |
| 60° | 162.9 | 420.5 | 210.3 |
| 65° | 61.1 | 188.0 | 136.2 |
| 70° | 34.4 | 56.4 | 76.5 |
| 75° | 20.3 | 27.2 | 46.5 |
| 80° | 9.2 | 12.8 | 26.2 |
| 85° | 0.0 | 0.8 | 9.3 |
| 90° | 0.0 | 0.0 | 0.0 |

UGR classification

Corrected Glare Ratings for a Total Lamp Flux of 5650lm (S = 0.25H)

| Ceiling Walls Floor | Room Reflection Factors (%) | | | | | | | | | |
|---|-----------------------------|------|-------|------|------|-----------------------|------|------|------|------|
| | 70 | 70 | 50 | 50 | 30 | 70 | 70 | 50 | 50 | 30 |
| Room Dimensions | Viewed Crosswise | | | | | Viewed Endwise | | | | |
| X = 2H Y = 2H | 18.0 | 19.6 | 18.3 | 19.8 | 20.1 | 18.5 | 20.1 | 18.8 | 20.3 | 20.6 |
| Y = 3H | 17.9 | 19.3 | 18.2 | 19.6 | 19.8 | 18.4 | 19.8 | 18.8 | 20.1 | 20.4 |
| Y = 4H | 17.8 | 19.1 | 18.1 | 19.4 | 19.7 | 18.4 | 19.7 | 18.7 | 20.0 | 20.3 |
| Y = 6H | 17.7 | 18.9 | 18.1 | 19.2 | 19.6 | 18.3 | 19.5 | 18.7 | 19.9 | 20.2 |
| Y = 8H | 17.7 | 18.8 | 18.1 | 19.2 | 19.5 | 18.3 | 19.5 | 18.7 | 19.8 | 20.1 |
| Y = 12H | 17.6 | 18.7 | 18.0 | 19.1 | 19.4 | 18.3 | 19.4 | 18.7 | 19.7 | 20.1 |
| X = 4H Y = 2H | 18.1 | 19.4 | 18.5 | 19.7 | 20.0 | 18.5 | 19.8 | 18.9 | 20.1 | 20.4 |
| Y = 3H | 18.0 | 19.1 | 18.4 | 19.4 | 19.8 | 18.5 | 19.6 | 18.9 | 19.9 | 20.3 |
| Y = 4H | 17.9 | 18.9 | 18.3 | 19.2 | 19.6 | 18.5 | 19.5 | 18.9 | 19.8 | 20.2 |
| Y = 6H | 17.9 | 18.7 | 18.3 | 19.1 | 19.5 | 18.5 | 19.3 | 18.9 | 19.7 | 20.1 |
| Y = 8H | 17.8 | 18.6 | 18.3 | 19.0 | 19.4 | 18.5 | 19.2 | 18.9 | 19.6 | 20.0 |
| Y = 12H | 17.8 | 18.5 | 18.3 | 18.9 | 19.4 | 18.4 | 19.1 | 18.9 | 19.6 | 20.0 |
| X = 8H Y = 4H | 17.9 | 18.6 | 18.3 | 19.0 | 19.4 | 18.4 | 19.2 | 18.8 | 19.6 | 20.0 |
| Y = 6H | 17.8 | 18.4 | 18.3 | 18.9 | 19.3 | 18.4 | 19.0 | 18.9 | 19.5 | 19.9 |
| Y = 8H | 17.8 | 18.3 | 18.2 | 18.8 | 19.3 | 18.4 | 18.9 | 18.9 | 19.4 | 19.9 |
| Y = 12H | 17.7 | 18.2 | 18.2 | 18.7 | 19.2 | 18.4 | 18.8 | 18.9 | 19.3 | 19.8 |
| X = 12H Y = 4H | 17.8 | 18.5 | 18.3 | 18.9 | 19.4 | 18.4 | 19.1 | 18.8 | 19.5 | 19.9 |
| Y = 6H | 17.8 | 18.3 | 18.2 | 18.8 | 19.3 | 18.4 | 18.9 | 18.8 | 19.4 | 19.9 |
| Y = 8H | 17.7 | 18.2 | 18.2 | 18.7 | 19.2 | 18.3 | 18.8 | 18.8 | 19.3 | 19.8 |
| UGR Variations with Observer Position for Luminaire Spacings S | | | | | | | | | | |
| S = 1.0H | +1.4 | | -2.7 | | +1.0 | | -2.1 | | | |
| S = 1.5H | +2.7 | | -8.5 | | +2.0 | | -6.3 | | | |
| S = 2.0H | +4.2 | | -12.3 | | +3.5 | | -7.5 | | | |

Colour properties

Correlated Colour Temperature : 4000

Ra: 80

V3RS10M/N6M0D0X2

Efficiency

Utilisation Factors according to IES (%)

| | Room Reflection Factors (%) | | | | | | | | | |
|---------|-----------------------------|-----|-----|-----|-----|----|----|----|----|----|
| | 80 | 80 | 80 | 50 | 50 | 50 | 30 | 30 | 30 | 0 |
| Ceiling | 80 | 80 | 80 | 50 | 50 | 50 | 30 | 30 | 30 | 0 |
| Walls | 50 | 30 | 10 | 50 | 30 | 10 | 50 | 30 | 10 | 0 |
| Floor | 20 | 20 | 20 | 20 | 20 | 20 | 20 | 20 | 20 | 0 |
| RCR = 1 | 108 | 106 | 105 | 102 | 100 | 99 | 98 | 97 | 96 | 90 |
| 2 | 98 | 94 | 91 | 93 | 90 | 87 | 90 | 87 | 85 | 81 |
| 3 | 89 | 84 | 80 | 84 | 80 | 77 | 82 | 78 | 76 | 72 |
| 4 | 81 | 75 | 70 | 77 | 72 | 69 | 75 | 71 | 68 | 64 |
| 5 | 74 | 67 | 62 | 70 | 65 | 61 | 69 | 64 | 61 | 58 |
| 6 | 67 | 61 | 56 | 65 | 59 | 55 | 63 | 58 | 55 | 52 |
| 7 | 62 | 55 | 50 | 60 | 54 | 50 | 58 | 53 | 49 | 47 |
| 8 | 57 | 50 | 46 | 55 | 49 | 45 | 54 | 49 | 45 | 43 |
| 9 | 53 | 46 | 42 | 52 | 46 | 41 | 50 | 45 | 41 | 39 |
| 10 | 50 | 43 | 38 | 48 | 42 | 38 | 47 | 42 | 38 | 36 |

Utilisation Factors according to LiTG (%)

| | Room Reflection Factors (%) | | | | | | | | | |
|----------|-----------------------------|-----|-----|-----|-----|-----|----|----|----|----|
| | 80 | 80 | 80 | 50 | 50 | 50 | 30 | 30 | 30 | 0 |
| Ceiling | 80 | 80 | 80 | 50 | 50 | 50 | 30 | 30 | 30 | 0 |
| Walls | 50 | 30 | 50 | 30 | 50 | 30 | 50 | 30 | 30 | 0 |
| Floor | 30 | 30 | 10 | 10 | 30 | 30 | 10 | 10 | 10 | 0 |
| k = 0.60 | 61 | 53 | 58 | 51 | 59 | 52 | 56 | 51 | 50 | 45 |
| 0.80 | 73 | 65 | 68 | 62 | 70 | 63 | 66 | 61 | 61 | 55 |
| 1.00 | 81 | 73 | 75 | 69 | 77 | 71 | 73 | 68 | 68 | 62 |
| 1.25 | 91 | 83 | 83 | 78 | 86 | 80 | 81 | 77 | 76 | 71 |
| 1.50 | 96 | 89 | 87 | 83 | 91 | 86 | 85 | 81 | 80 | 76 |
| 2.00 | 103 | 97 | 92 | 89 | 97 | 92 | 90 | 87 | 86 | 81 |
| 2.50 | 109 | 103 | 96 | 93 | 101 | 97 | 93 | 91 | 90 | 86 |
| 3.00 | 113 | 108 | 99 | 96 | 105 | 101 | 96 | 94 | 93 | 89 |
| 4.00 | 116 | 112 | 101 | 99 | 107 | 104 | 98 | 96 | 95 | 91 |
| 5.00 | 119 | 116 | 103 | 101 | 109 | 107 | 99 | 98 | 96 | 93 |

Available accessories

V3H2500 *Ceiling mounting brackets*

V3H9900 *Installation file*

V3H9960 *Installation tool*

Dimensional drawing

