

V3RS10M/N3M0D0X2

surface-mounted luminaire • linear

housing: lacquered aluminium

light source: low power LED • 4000 K

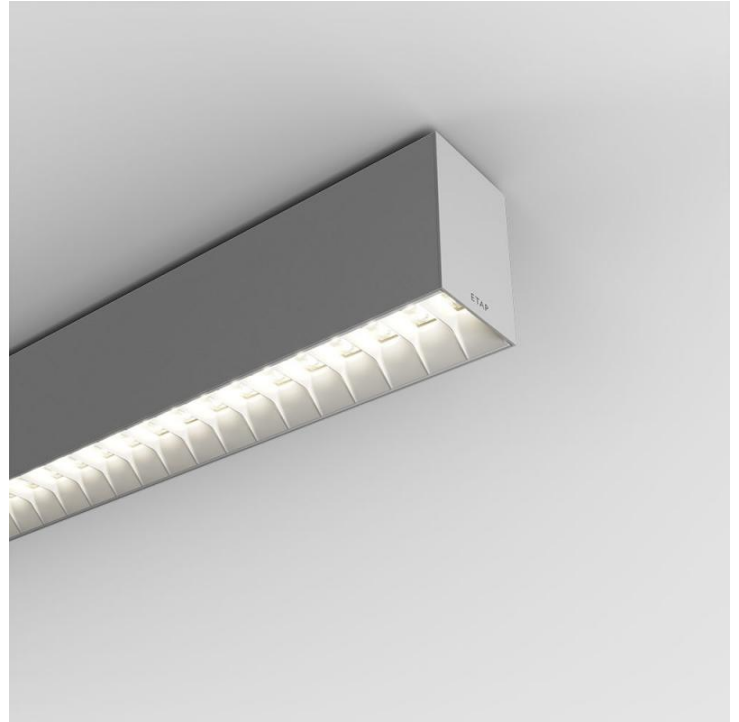
optics: Shielded lens • White polycarbonate (PC) • medium wide-angle

UGR classification: <=19

luminous flux: 2900 lm

luminous efficacy: 140 lm/W

LLMF: 96% @ 50khrs (Tq=25°C)



Mechanical properties

dimensions: 1371 mm x 60 mm x 90 mm

colour: RAL9006 - white aluminium (textured)

type: individual luminaire

IP: IP20

Electrical properties

driver: DALI dimmable

power: 20.7 W

voltage: 220-240V

frequency: 50-60Hz AC

photobiological safety: EN 62471: RISK GROUP 1 UNLIMITED

V3RS10M/N3M0D0X2

Luminance

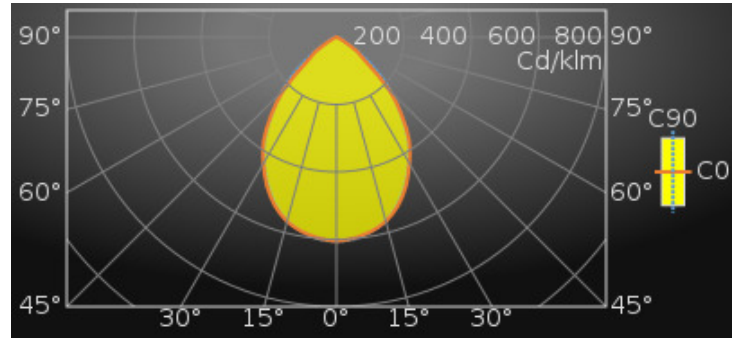
luminous flux : 2900 lm

luminous efficacy : 140 lm/W

luminance @ 65° : 3000 cd/m²

UGR classification: <=19

luminous area : 0.08 m²



Average Luminances (Cd/m²) for 2900lm

Gamma	C0	C30	C45	C60	C90
45°	11862	13874	14699	13861	12097
50°	6829	11081	12088	11509	9489
55°	5052	6590	9318	8860	5586
60°	2183	4611	5635	4733	2819
65°	969	1706	2980	2399	2159
70°	673	819	1104	1553	1499
75°	524	581	703	943	1205
80°	354	437	494	610	1012
85°	1	5	60	266	716

Classifications

CIE: 709 / 966 / 997 / 1000 / 1000

CIE FLUXCODE : 0.71 / 0.97 / 1.00 / 1.00 / 1.00

BZ: BZ2

CAE: Symmetrical

DIN: A60 (Nach Arbeitsblatt 7)

DIN_U: Phi u = 1.00

DIN_SU: Phi su = 0.71

UTE: 1.00 C + 0.00 T

V3RS10M/N3M0D0X2

Luminous intensities in cd

Lifetime Data (Tq=25.0°C)

Time(khrs)	LLMF(%)	Cx(%)
10	99	2
20	99	4
30	98	6
40	98	8
50	97	10
60	96	12

Intensity for 2900lm

Gamma	C0	C45	C90
0°	1755.2	1755.2	1755.2
5°	1736.7	1737.2	1743.2
10°	1700.5	1695.3	1697.2
15°	1641.2	1638.4	1634.7
20°	1545.4	1553.7	1528.1
25°	1415.4	1442.7	1390.7
30°	1254.7	1305.4	1239.2
35°	1091.0	1151.0	1061.1
40°	872.1	988.3	853.2
45°	642.6	796.2	655.3
50°	336.3	595.3	467.3
55°	222.0	409.5	245.5
60°	83.6	215.8	108.0
65°	31.4	96.5	69.9
70°	17.6	28.9	39.3
75°	10.4	13.9	23.9
80°	4.7	6.6	13.5
85°	0.0	0.4	4.8
90°	0.0	0.0	0.0

UGR classification

Corrected Glare Ratings for a Total Lamp Flux of 2900lm (S = 0.25H)

Ceiling Walls Floor	Room Reflection Factors (%)									
	70	70	50	50	30	70	70	50	50	30
Room Dimensions	Viewed Crosswise					Viewed Endwise				
X = 2H Y = 2H	18.1	19.7	18.4	19.9	20.2	18.6	20.2	18.9	20.4	20.7
Y = 3H	18.0	19.4	18.3	19.6	19.9	18.5	19.9	18.9	20.2	20.5
Y = 4H	17.9	19.2	18.2	19.5	19.8	18.5	19.8	18.8	20.1	20.4
Y = 6H	17.8	19.0	18.2	19.3	19.6	18.4	19.6	18.8	19.9	20.3
Y = 8H	17.8	18.9	18.1	19.3	19.6	18.4	19.6	18.8	19.9	20.2
Y = 12H	17.7	18.8	18.1	19.2	19.5	18.4	19.5	18.8	19.8	20.2
X = 4H Y = 2H	18.2	19.5	18.5	19.8	20.1	18.6	19.9	19.0	20.2	20.5
Y = 3H	18.1	19.2	18.5	19.5	19.9	18.6	19.7	19.0	20.0	20.4
Y = 4H	18.0	19.0	18.4	19.3	19.7	18.6	19.5	19.0	19.9	20.3
Y = 6H	18.0	18.8	18.4	19.2	19.6	18.6	19.4	19.0	19.8	20.2
Y = 8H	17.9	18.7	18.4	19.1	19.5	18.5	19.3	19.0	19.7	20.1
Y = 12H	17.9	18.6	18.3	19.0	19.5	18.5	19.2	19.0	19.6	20.1
X = 8H Y = 4H	17.9	18.7	18.4	19.1	19.5	18.5	19.3	18.9	19.7	20.1
Y = 6H	17.9	18.5	18.4	19.0	19.4	18.5	19.1	18.9	19.6	20.0
Y = 8H	17.9	18.4	18.3	18.9	19.4	18.5	19.0	18.9	19.5	20.0
Y = 12H	17.8	18.3	18.3	18.8	19.3	18.4	18.9	18.9	19.4	19.9
X = 12H Y = 4H	17.9	18.6	18.4	19.0	19.5	18.5	19.2	18.9	19.6	20.0
Y = 6H	17.9	18.4	18.3	18.9	19.4	18.5	19.0	18.9	19.5	20.0
Y = 8H	17.8	18.3	18.3	18.8	19.3	18.4	18.9	18.9	19.4	19.9
UGR Variations with Observer Position for Luminaire Spacings S										
S = 1.0H	+1.4		-2.7		+1.0		-2.1			
S = 1.5H	+2.7		-8.5		+2.0		-6.3			
S = 2.0H	+4.2		-12.3		+3.5		-7.5			

Colour properties

Correlated Colour Temperature : 4000

Ra: 80

V3RS10M/N3M0D0X2

Efficiency

Utilisation Factors according to IES (%)

	Room Reflection Factors (%)									
	80	80	80	50	50	50	30	30	30	0
Ceiling	80	80	80	50	50	50	30	30	30	0
Walls	50	30	10	50	30	10	50	30	10	0
Floor	20	20	20	20	20	20	20	20	20	0
RCR = 1	108	106	105	102	100	99	98	97	96	90
2	98	94	91	93	90	87	90	87	85	81
3	89	84	80	84	80	77	82	78	76	72
4	81	75	70	77	72	69	75	71	68	64
5	74	67	62	70	65	61	69	64	61	58
6	67	61	56	65	59	55	63	58	55	52
7	62	55	50	60	54	50	58	53	49	47
8	57	50	46	55	49	45	54	49	45	43
9	53	46	42	52	46	41	50	45	41	39
10	50	43	38	48	42	38	47	42	38	36

Utilisation Factors according to LiTG (%)

	Room Reflection Factors (%)									
	80	80	80	50	50	50	30	30	30	0
Ceiling	80	80	80	50	50	50	30	30	30	0
Walls	50	30	50	30	50	30	50	30	30	0
Floor	30	30	10	10	30	30	10	10	10	0
k = 0.60	61	53	58	51	59	52	56	51	50	45
0.80	73	65	68	62	70	63	66	61	61	55
1.00	81	73	75	69	77	71	73	68	68	62
1.25	91	83	83	78	86	80	81	77	76	71
1.50	96	89	87	83	91	86	85	81	80	76
2.00	103	97	92	89	97	92	90	87	86	81
2.50	109	103	96	93	101	97	93	91	90	86
3.00	113	108	99	96	105	101	96	94	93	89
4.00	116	112	101	99	107	104	98	96	95	91
5.00	119	116	103	101	109	107	99	98	96	93

Available accessories

V3H2500 *Ceiling mounting brackets*

V3H9900 *Installation file*

V3H9960 *Installation tool*

Dimensional drawing

