

# V3RB10M/W6M0D0X0

luminária de montagem saliente • linear

*base*: alumínio lacado

*fonte de luz*: LED LP • 3000 K

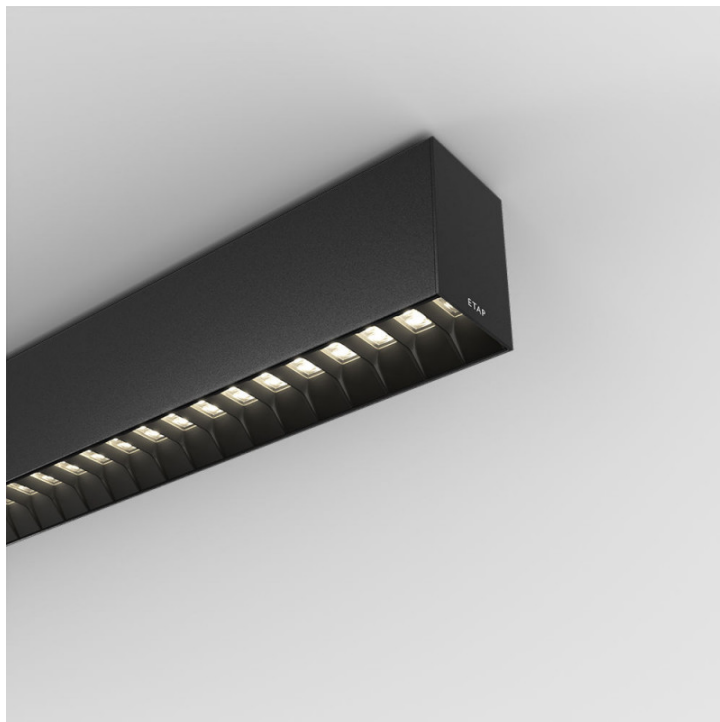
*óptica*: Shielded lens • Preto policarbonato (PC) • extensiva média

*classificação UGR*: <=19

*fluxo luminoso*: 5350 lm

*fluxo luminoso específico*: 121 lm/W

*LLMF*: 95% @ 50khrs (Tq=25°C)



## Medidas

*dimensões*: 2739 mm x 60 mm x 90 mm

*cor*: RAL9005-preto (texturado)

*tipo*: luminária individual

*IP*: IP20

## Equipamento eléctrico

*driver*: DALI regulável

*consumo de corrente*: 44.3 W

*tensão*: 220-240V

*frequência*: 50-60Hz AC

*segurança fotobiológica*: EN 62471: RISK GROUP 1 UNLIMITED

# V3RB10M/W6M0D0X0

## Luminance

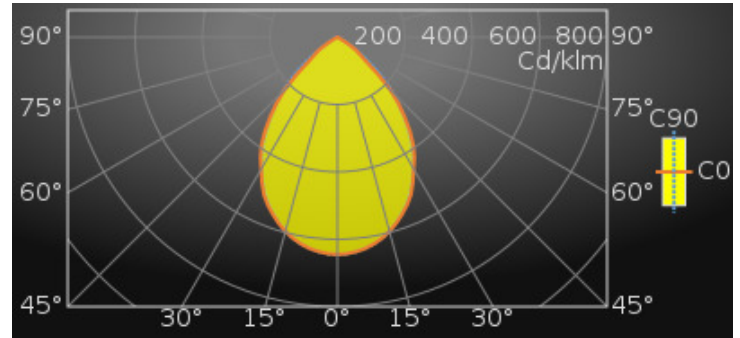
fluxo luminoso : 5350 lm

fluxo luminoso específico : 121 lm/W

luminância @ 65° : 3000 cd/m<sup>2</sup>

classificação UGR: <=19

área luminosa : 0.15 m<sup>2</sup>



Average Luminances (Cd/m<sup>2</sup>) for 5350lm

Gamma	C0	C30	C45	C60	C90
45°	11003	12908	13564	12747	11221
50°	5792	9787	10982	10284	8203
55°	4035	5445	8006	7294	4069
60°	1022	3513	4286	3268	1478
65°	0	662	1713	1109	769
70°	0	1	100	308	170
75°	0	0	0	0	45
80°	0	0	0	0	80
85°	0	0	0	0	32

## Classificações

CIE: 739 / 985 / 1000 / 1000 / 1000

CIE FLUXCODE : 0.74 / 0.99 / 1.00 / 1.00 / 1.00

BZ: BZ2/0.8/BZ1

CAE: Symmetrical

DIN: A60 (Nach Arbeitsblatt 7)

DIN\_U: Phi u = 1.00

DIN\_SU: Phi su = 0.73

UTE: 1.00 B + 0.00 T

# V3RB10M/W6M0D0X0

## Intensidades luminosas em cd

Lifetime Data (Tq=25.0°C)

Time(khrs)	LLMF(%)	Cx(%)
10	99	2
20	98	4
30	97	6
40	97	8
50	96	10
60	95	12

Intensity for 5350lm

Gamma	C0	C45	C90
0°	3449.9	3449.9	3449.9
5°	3419.0	3414.7	3416.6
10°	3336.3	3325.0	3329.1
15°	3191.7	3194.4	3186.5
20°	2995.6	3010.0	2975.1
25°	2760.0	2778.4	2721.6
30°	2420.3	2497.5	2399.1
35°	2106.7	2194.4	2023.5
40°	1658.2	1853.1	1616.2
45°	1192.0	1469.5	1215.7
50°	570.4	1081.5	807.9
55°	354.6	703.6	357.6
60°	78.3	328.4	113.2
65°	0.0	110.9	49.8
70°	0.0	5.2	8.9
75°	0.0	0.0	1.8
80°	0.0	0.0	2.1
85°	0.0	0.0	0.4
90°	0.0	0.0	0.0

## classificação UGR

Corrected Glare Ratings for a Total Lamp Flux of 5350lm (S = 0.25H)

Ceiling Walls Floor	Room Reflection Factors (%)									
	70	70	50	50	30	70	70	50	50	30
<b>Room Dimensions</b>	<b>Viewed Crosswise</b>					<b>Viewed Endwise</b>				
X = 2H Y = 2H	17.6	19.2	17.9	19.4	19.7	17.9	19.5	18.2	19.7	20.0
Y = 3H	17.4	18.8	17.8	19.1	19.4	17.8	19.1	18.1	19.4	19.7
Y = 4H	17.4	18.6	17.7	18.9	19.2	17.7	19.0	18.0	19.2	19.5
Y = 6H	17.3	18.4	17.6	18.8	19.1	17.6	18.8	18.0	19.1	19.4
Y = 8H	17.2	18.4	17.6	18.7	19.0	17.6	18.7	17.9	19.0	19.3
Y = 12H	17.2	18.3	17.6	18.6	19.0	17.5	18.6	17.9	18.9	19.3
X = 4H Y = 2H	17.6	18.9	18.0	19.2	19.5	17.9	19.1	18.2	19.4	19.7
Y = 3H	17.5	18.5	17.8	18.9	19.2	17.7	18.8	18.1	19.1	19.5
Y = 4H	17.4	18.3	17.8	18.7	19.0	17.7	18.6	18.1	18.9	19.3
Y = 6H	17.3	18.1	17.7	18.5	18.9	17.6	18.4	18.0	18.8	19.2
Y = 8H	17.3	18.0	17.7	18.4	18.9	17.6	18.3	18.0	18.7	19.1
Y = 12H	17.3	17.9	17.7	18.4	18.8	17.5	18.2	18.0	18.6	19.1
X = 8H Y = 4H	17.3	18.0	17.7	18.4	18.9	17.6	18.3	18.0	18.7	19.1
Y = 6H	17.2	17.8	17.7	18.3	18.7	17.5	18.1	18.0	18.5	19.0
Y = 8H	17.2	17.7	17.7	18.2	18.7	17.5	18.0	17.9	18.5	18.9
Y = 12H	17.2	17.6	17.6	18.1	18.6	17.4	17.9	17.9	18.4	18.9
X = 12H Y = 4H	17.3	17.9	17.7	18.4	18.8	17.5	18.2	18.0	18.6	19.1
Y = 6H	17.2	17.7	17.7	18.2	18.7	17.5	18.0	17.9	18.4	18.9
Y = 8H	17.2	17.6	17.6	18.1	18.6	17.4	17.9	17.9	18.4	18.9
<b>UGR Variations with Observer Position for Luminaire Spacings S</b>										
S = 1.0H	+1.7		-3.5		+1.3		-3.3			
S = 1.5H	+3.1		-16.5		+2.5		-12.2			
S = 2.0H	+4.6		-76.4		+4.1		-17.1			

## Colour properties

Correlated Colour Temperature : 3000

Ra: 80

# V3RB10M/W6M0D0X0

## Eficiência

Utilisation Factors according to IES (%)

	Room Reflection Factors (%)									
	80	80	80	50	50	50	30	30	30	0
Ceiling	80	80	80	50	50	50	30	30	30	0
Walls	50	30	10	50	30	10	50	30	10	0
Floor	20	20	20	20	20	20	20	20	20	0
RCR = 1	109	107	105	102	101	100	99	97	97	91
2	99	95	92	94	91	89	91	88	86	82
3	90	85	81	86	82	79	83	80	77	73
4	82	76	72	78	74	70	76	72	69	66
5	75	69	64	72	67	63	70	66	62	59
6	69	62	58	66	61	57	65	60	56	54
7	64	57	52	61	56	52	60	55	51	49
8	59	52	47	57	51	47	56	50	47	45
9	55	48	43	53	47	43	52	47	43	41
10	51	44	40	49	44	40	49	43	39	38

Utilisation Factors according to LiTG (%)

	Room Reflection Factors (%)									
	80	80	80	50	50	50	30	30	30	0
Ceiling	80	80	80	50	50	50	30	30	30	0
Walls	50	30	50	30	50	30	50	30	30	0
Floor	30	30	10	10	30	30	10	10	10	0
k = 0.60	62	55	59	53	60	54	58	53	52	47
0.80	74	67	70	64	71	65	68	63	63	57
1.00	83	75	77	71	79	73	75	70	70	65
1.25	92	85	85	80	87	82	82	79	78	73
1.50	98	91	89	85	92	87	86	83	82	78
2.00	105	99	94	90	98	93	91	88	87	83
2.50	110	104	97	94	102	98	94	92	91	87
3.00	114	109	100	97	105	102	97	95	94	90
4.00	117	113	101	99	108	105	98	97	95	92
5.00	120	117	103	101	110	107	100	99	97	94

## Acessórios

V3H2500 *Suportes de montagem no teto*

V3H9900 *Manual de instalação*

V3H9960 *Installation tool*

## Esboço

