



Badminton sports hall,  
Voiron, France

E7

COMFORTABLE LIGHT  
FOR INDOOR SPORTS &  
INDUSTRY

# E7

COMFORTABLE LIGHT FOR INDOOR SPORTS & INDUSTRY



For industry and sport halls, 5m and higher



High luminous flux



UGR  $\leq$  22



Ball proof certified, IK 08



Easy to install and maintain



Slender design



DALI

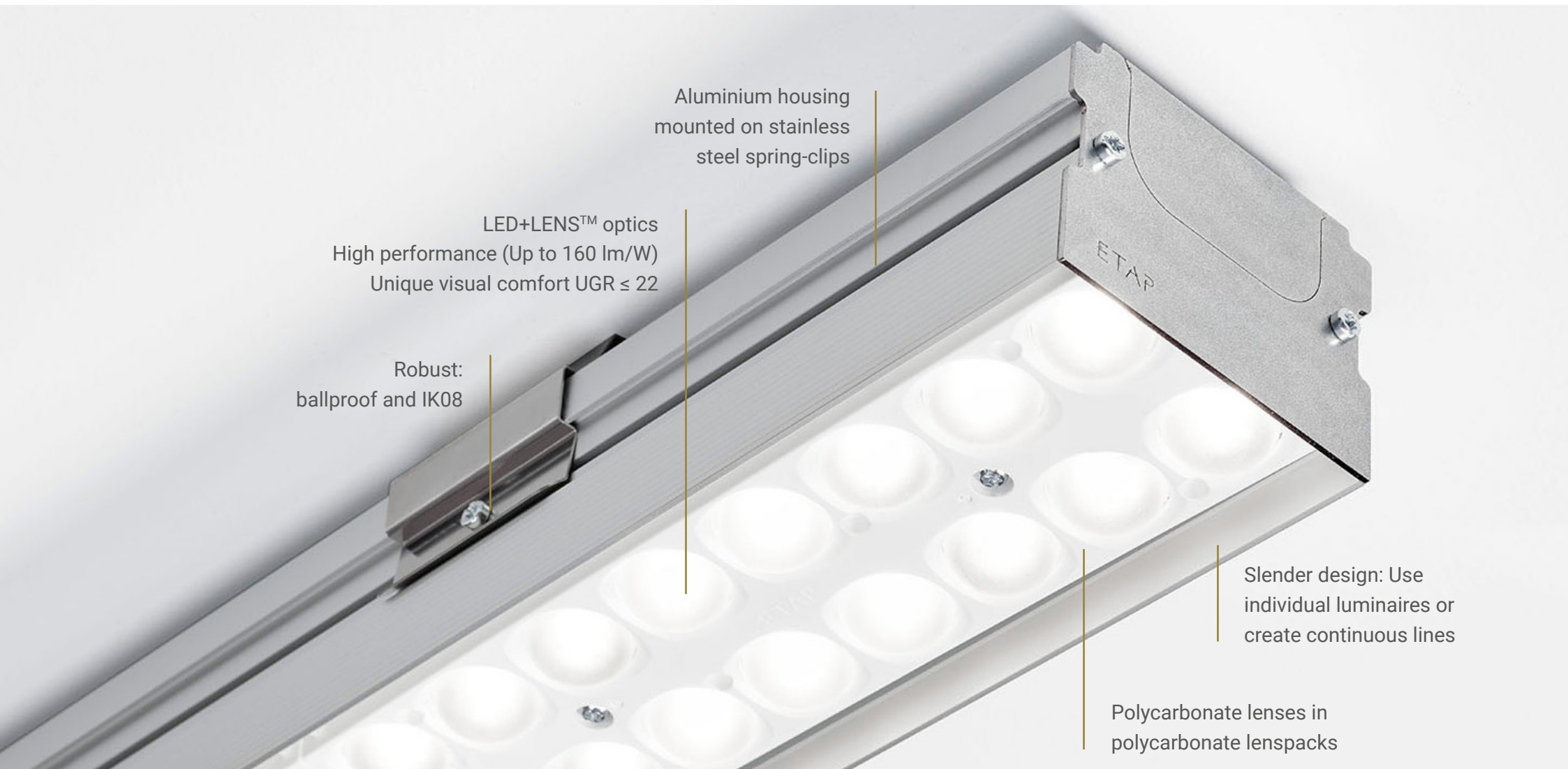


ENEC approved

E7

UNIQUE DESIGN

ETAP tomorrow's light



Aluminium housing  
mounted on stainless  
steel spring-clips

LED+LENS™ optics  
High performance (Up to 160 lm/W)  
Unique visual comfort  $UGR \leq 22$

Robust:  
ballproof and IK08

Slender design: Use  
individual luminaires or  
create continuous lines

Polycarbonate lenses in  
polycarbonate lenspacks

E7

—  
LINES OR INDIVIDUAL LUMINAIRES? YOUR CHOICE.

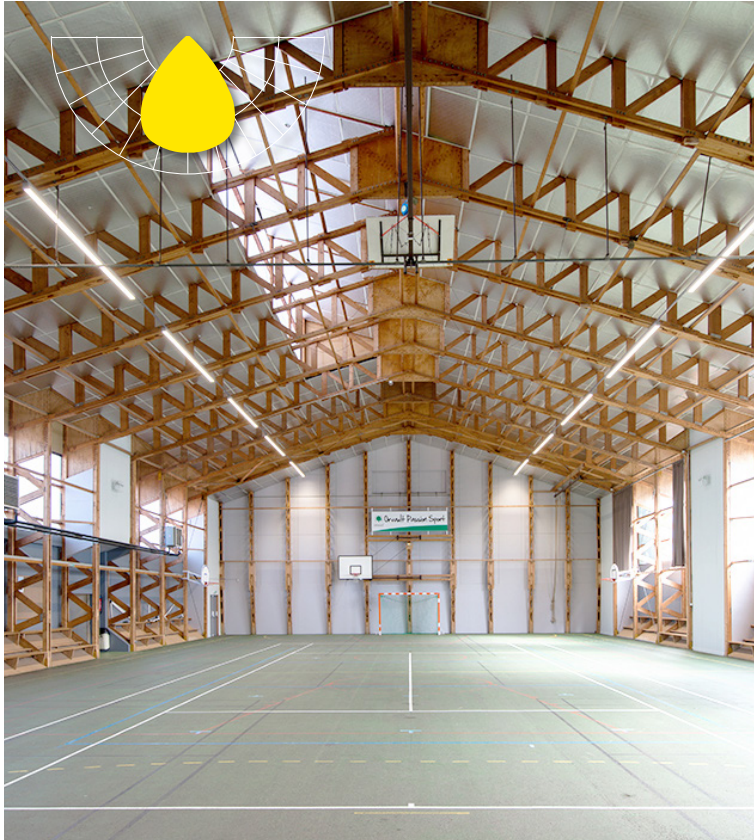
ETAP tomorrow's light



Gymnase Des Belians  
Bouguenais, France

E7

TWO LIGHT DISTRIBUTIONS



MEDIUM BEAM (UGR  $\leq$  22)

More concentrated light,  
for higher mounting or tilted at an angle.



WIDE BEAM (UGR  $\leq$  22)

Optimal uniformity at lower mounting heights.

# E7

PERFECT FOR SPORTS APPLICATIONS



## STANDARDS-COMPLIANT

- As required in EN12464-1, Table 6.36 for a School Sports hall or gymnasium: 300 lux, 0,6 Uniformity, UGR  $\leq$  22
- Compliant with EN12193 – Sport Lighting standard



## BALL PROOF CERTIFIED

DIN 18032-3



Ball proof tested by DAkkS accredited ISP GmbH Institut Für Sportstätten Prüfung. The ballproof test is done according to DIN 18032-3. In this test, which is carried out by a certified body, the luminaire is fired upon 36 times with a handball at 60 km/h, under different angles.

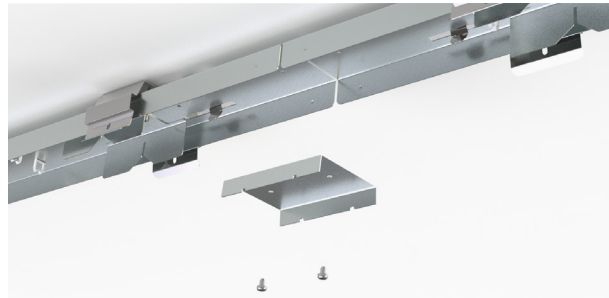
# E7

## EASY INSTALLATION

### INSTALLATION STEPS



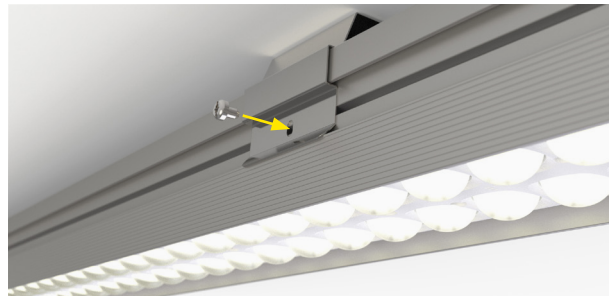
**1.** Mount the two spring-clips, then click the base profile in the springs. Make the electrical connection.



**(2.)** For in-line mounting, link the base profiles with the connection plate.

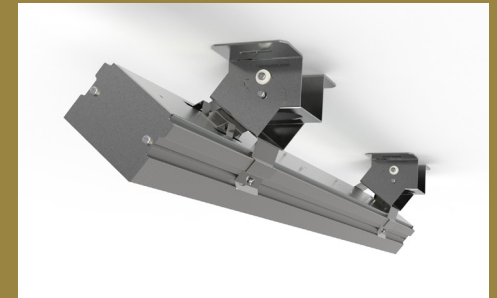


**3.** Snap the light module on the base profile – an automatic electrical connection is made between the module and the base



**(4.)** For ballproof mounting, the spring-clips are secured with screws

### MOUNTING OPTIONS



Accessory to mount at an angle of 18° or 36°



Suspension set

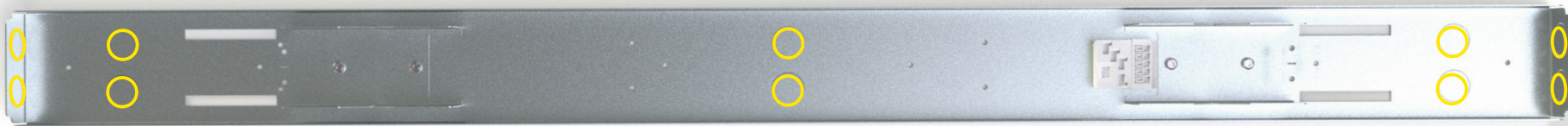
E7

EASY INSTALLATION

ETAP tomorrow's light

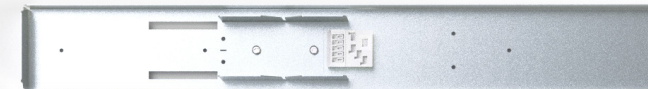
### CABLE ENTRY

There are multiple cable entry points foreseen via easy break-out openings

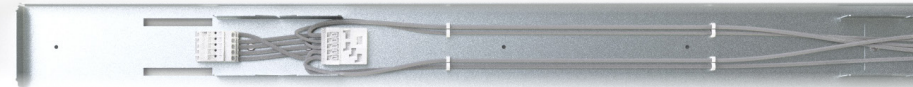


### THROUGH-WIRING

standard individual luminaire  
without through-wiring



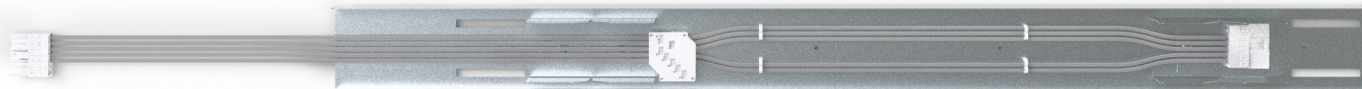
optional through-wiring  
for individual luminaire



In-line luminaire with standard 5 x 2,5 mm<sup>2</sup>  
through-wiring (L, N, PE, DA, DA)



optional through-wiring for in-line luminaire via Wago  
WINSTA plugs (allows for stranded wires, 2,5 mm<sup>2</sup>)


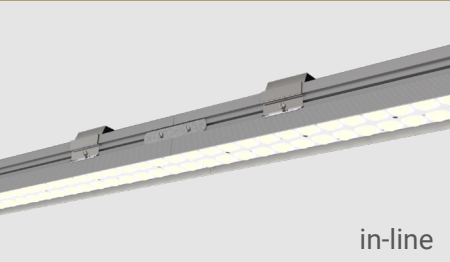




E7

RANGE

DESIGN

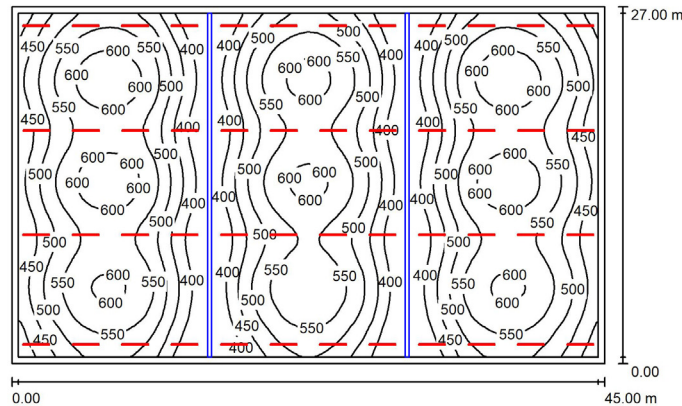
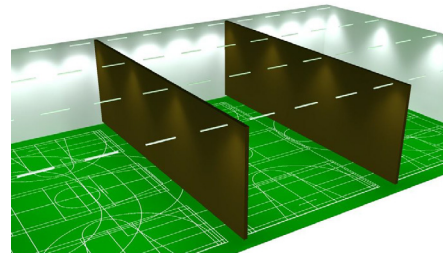
MOUNTING	LENGTH	COLOUR
 individual	1 m	anodised aluminium
	1.5 m	
	2 m	
	3 m	
 in-line	1 m	
	1.5 m	
	2 m	
	3 m	

LIGHTING TECHNOLOGY

OPTIC	UGR	LUMINOUS FLUX	LM/W	LLMF	COLOUR TEMPERATURE	VERSION
medium beam	≤ 22	10000 lm - 36000 lm	150-160 lm/W	99%	4,000 K	DALI
wide beam		9500 lm - 28000 lm				

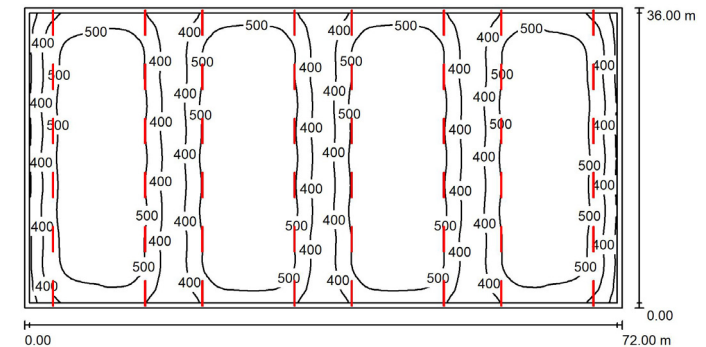
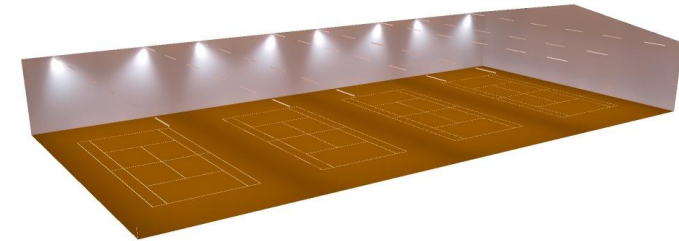
**SPORTS HALL**

45 x 27 m, with closed curtains - mounting height 9 m



**TENNIS HALL WITH 4 COURTS**

72 x 36 m - mounting height 9 m, angle 18°



**Type** E7B-S108-1C-840-200D, 2m, 20,000 lm, 160 lm/W

**Quantity** 48 luminaires

**Lighting level** 500 lux on all courts with curtains closed, study as per EN12193

**Uniformity on courts** 0.7 on all courts

**Installed power** 6 000 W – 0,98 W/m<sup>2</sup>/100 lx – 4,9 W/m<sup>2</sup>

**Type** E7B-S112-1C-840-300D, 3m, 30,000 lm, 158 lm/W

**Quantity** 48 luminaires

**Lighting level** 500 lux on all courts, study as per EN12193

**Uniformity on courts** 0.7 on all courts

**Installed power** 9072 W – 0,71 W/m<sup>2</sup>/100 lx – 3,5 W/m<sup>2</sup>

E7

CIRCULARITY



YEAR  
**5**  
WARRANTY  
DRIVER INCL.



**ENDLESS**

#### Maximized lifetime:

- E7 has 99% of its initial light output after 50.000 burning hours (L99B50 @ 50.000 hrs)
- Long lifetime of the driver: 100.000 hrs (Tc max: 75°C)
- 5 years warranty (driver included)

#### Backward compatibility

- Old E7 installations can be upgraded using the latest lenspacks



**EFFORTLESS**

#### Easy to install, maintain and dismount:

- Mounted on two brackets
- Light module can be dismounted easily for driver access
- E7 is assembled with screws only (no glue or welding)



**WASTELESS**

#### Contains 40% recycled material.

- 53% aluminum
- 16% electronics
- 12% plastics
- 11% steel
- 8% cardboard packaging

**Developed and manufactured in Belgium.**

# TOMORROW'S LIGHT

ENDLESS. EFFORTLESS. WASTELESS.



In a world facing severe challenges like global climate change and depletion of natural resources, ETAP's goal is to create tomorrow's light: **endless, effortless** and **wasteless**. We aim at helping our customers to reduce their carbon emissions and environmental footprint by providing long lasting energy-efficient lighting solutions with minimal use of virgin natural resources that are easy to maintain and refurbish.

As an active member of The Shift, ETAP has committed itself to achieving a CO2 reduction of 55% by 2025. Following the Science Based Target Initiative, our target is set with the goal to limit and eventually curb the global temperature rise and contribute to a zero-carbon economy.



Tap into tomorrow's light



# E7

## COMFORTABLE LIGHT FOR HIGH SPACES



Sports hall «Ivo Van Damme»  
Herent, Belgique

### CONTACT

#### UNITED KINGDOM

✉ leigh.johnson@etaplighting.com

☎ +44 (0)7855 264012

✉ simon.laws@etaplighting.com

☎ +44 (0)7813 212133

#### EXPORT

✉ export@etaplighting.com

☎ +32 (0)3 310 02 11

🌐 [www.etaplighting.com](http://www.etaplighting.com)

### INTERESTED?

Stay informed of lighting technology and developments by subscribing to our newsletter.

**YES, SIGN ME UP**