

US3





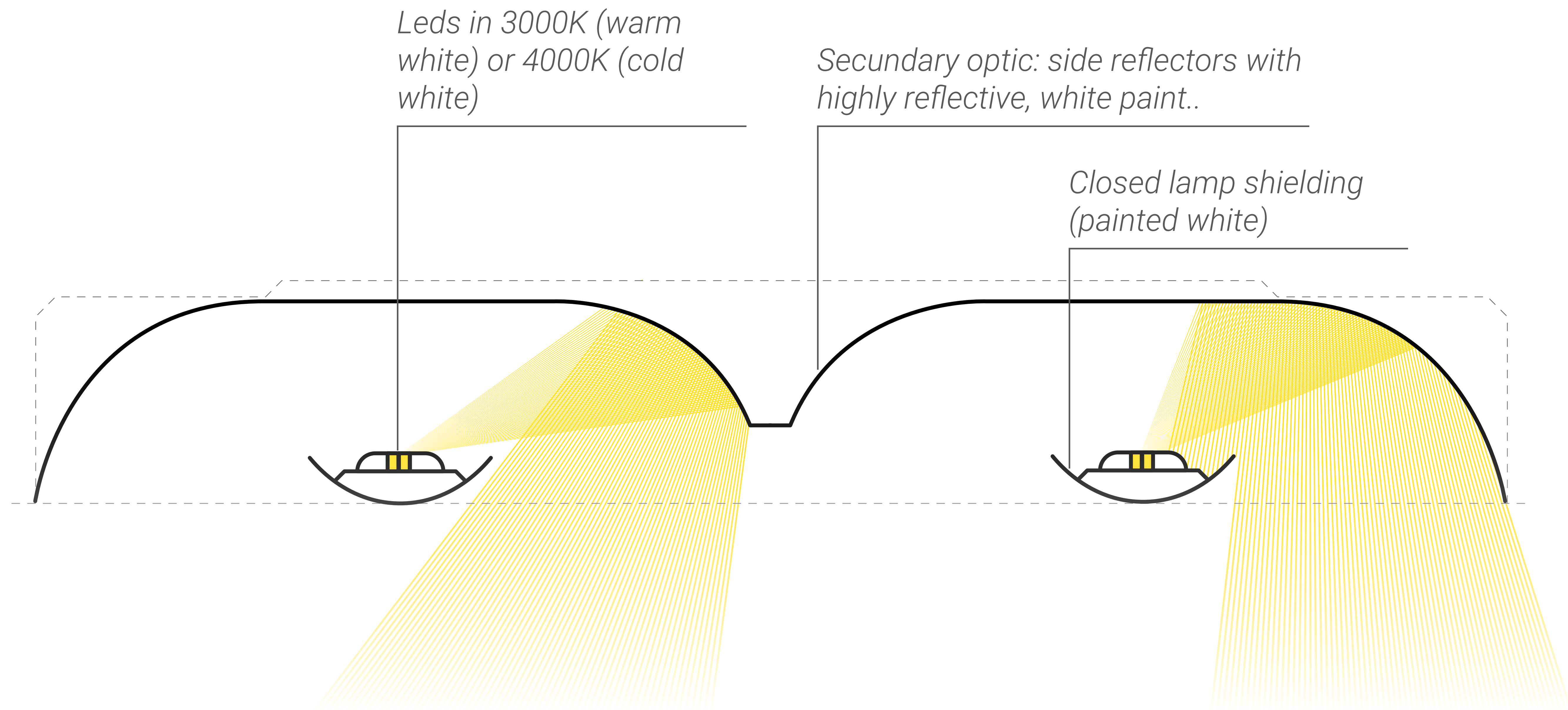
# US3 | Softlight with 100% indirect lighting

- Shielded light source, no direct view
- Bright and uniformly lit spaces
- High efficiency and long service life
- Widely applicable
- Easy installation and maintenance



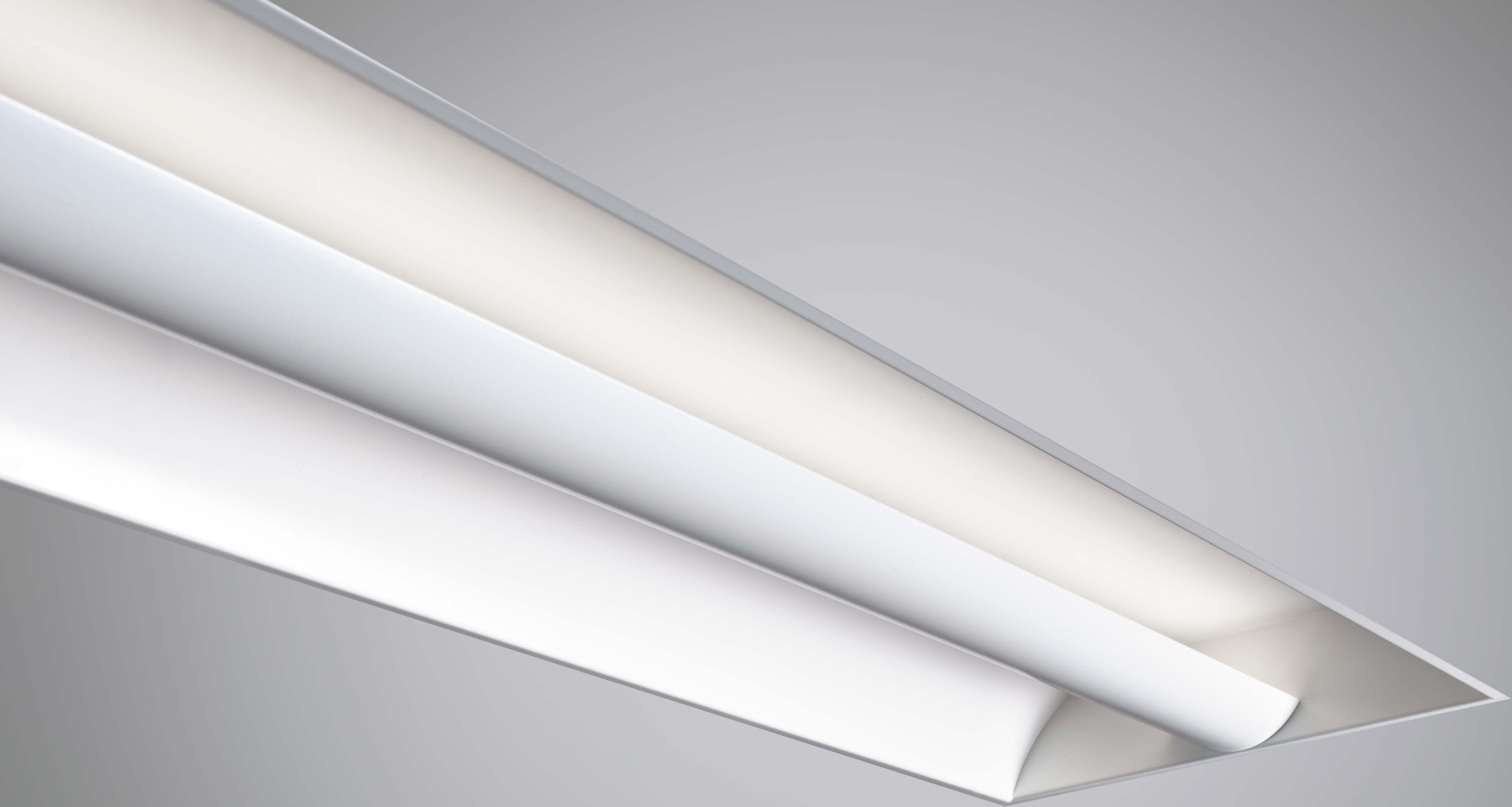


De US3 luminaires have a closed lamp shielding and direct the light in the room via a secondary optic.



*The softlight luminaires with closed lamp shield bring the light into the room via the secondary optic.*





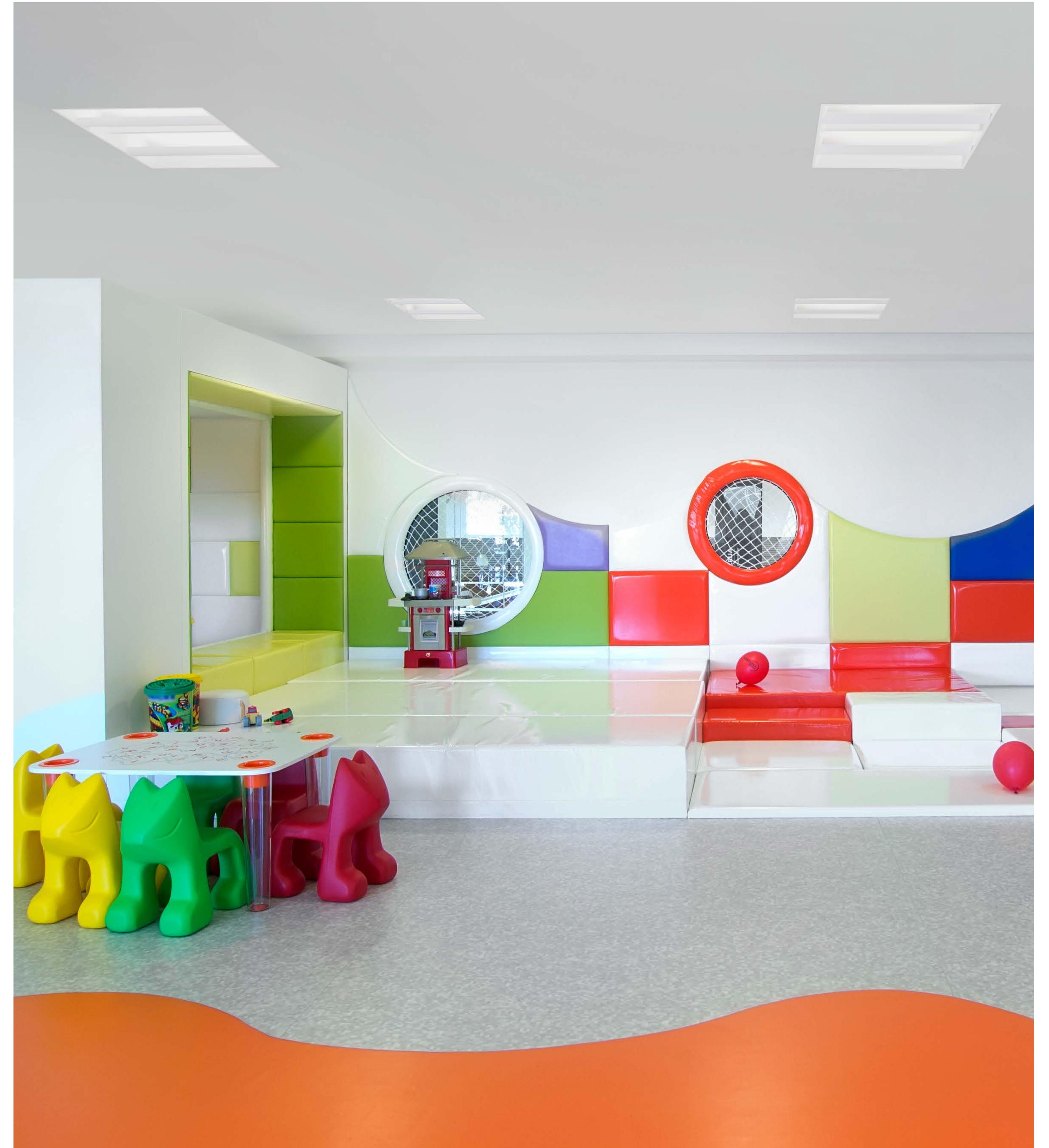


# US3 | Comfortable light

The bright LED light is completely shielded by the closed lamp shield, this avoids direct view into the light source.

US31 can be used in areas where direct viewing is disturbing: nursing homes and hospitals, crèches, medical practices and rehabilitation centers.

Versions with  $UGR \leq 19$  are available for classrooms and offices.

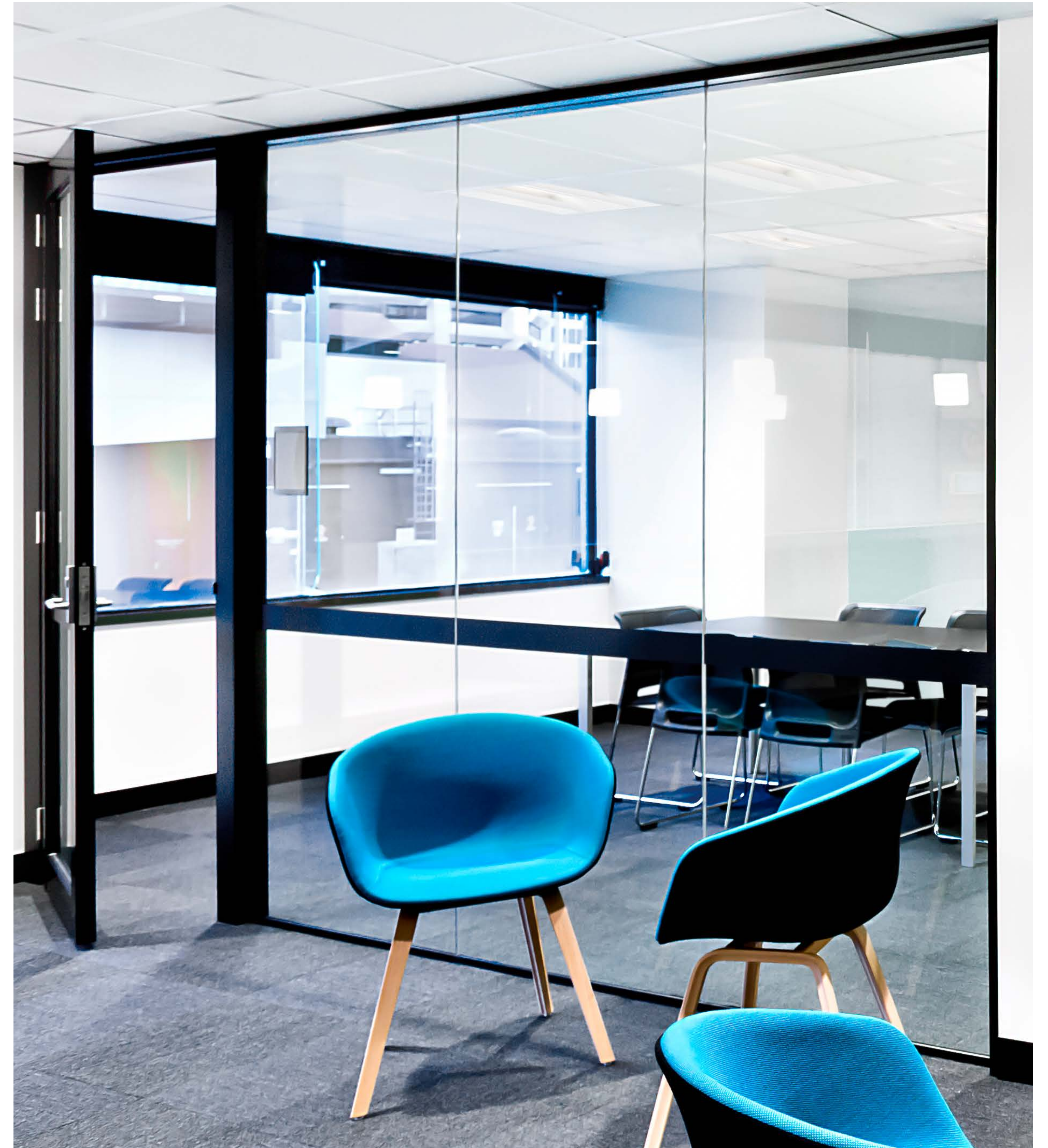




# US3 | Comfortable light

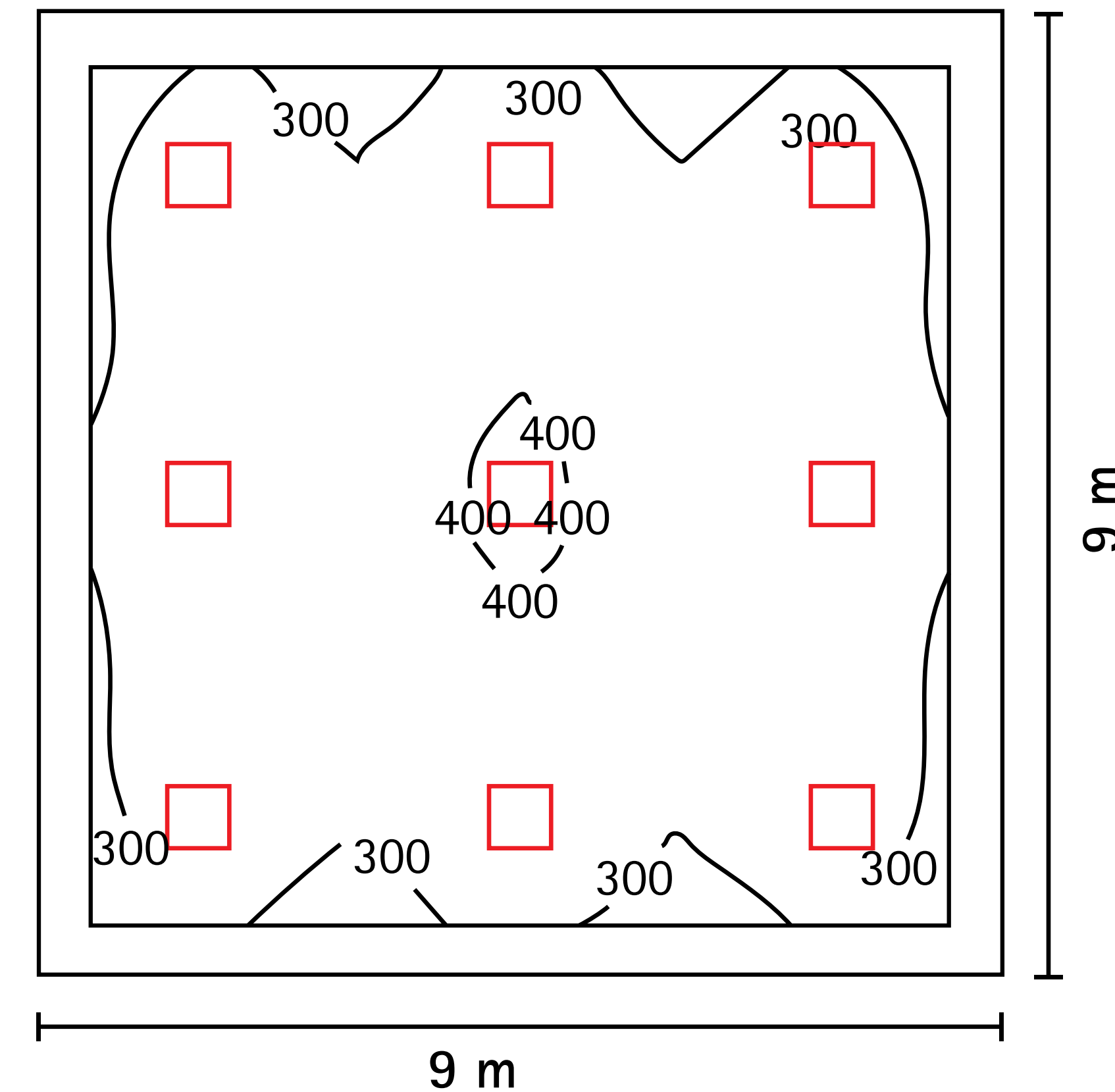
US3 luminaires illuminate walls and ceilings evenly, resulting in brightly lit spaces.

There are no shadows or markings between highlighted and unlit areas. The light is discreet and provides pleasant lighting.

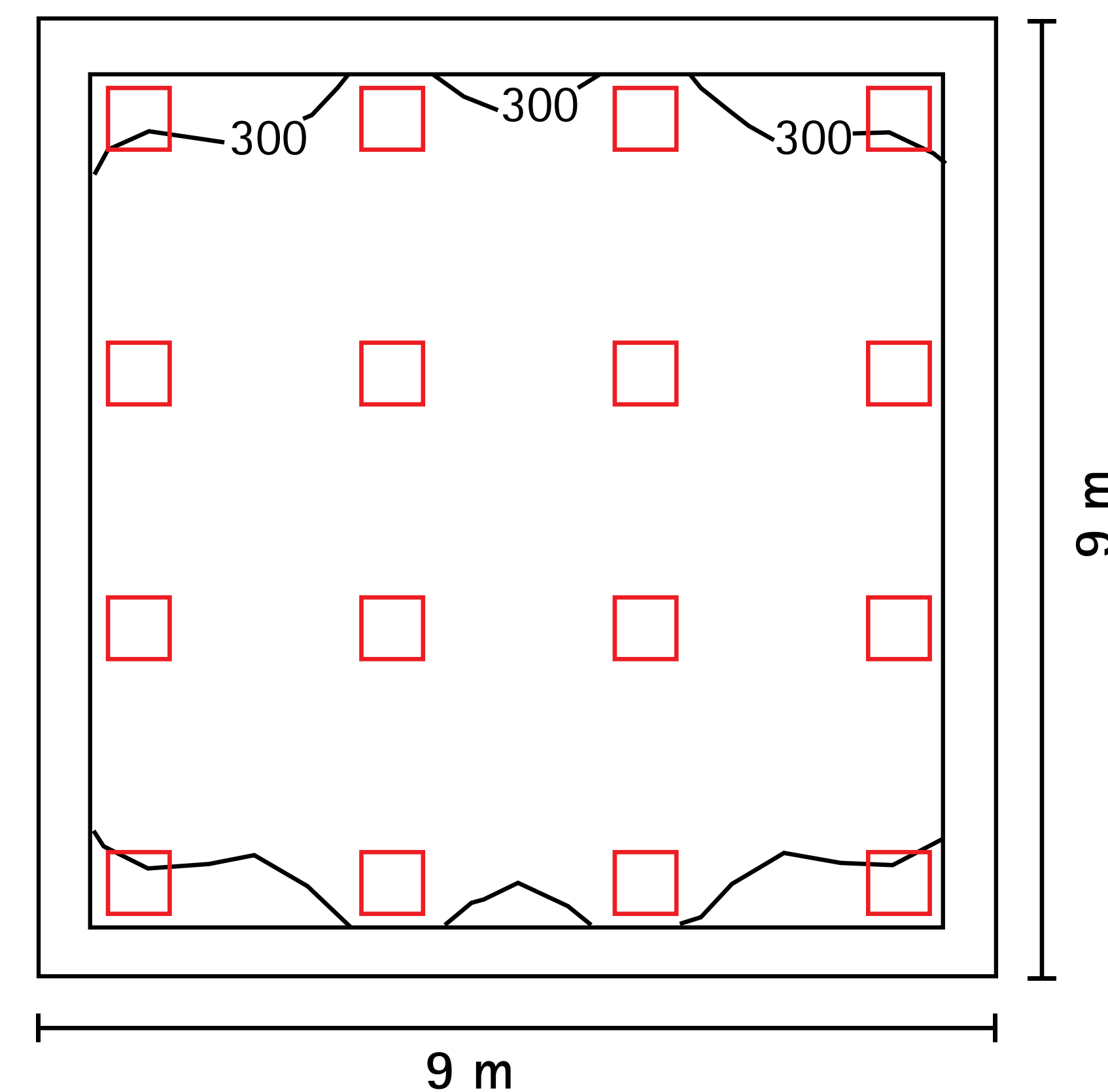




Thanks to the high-quality LEDs and the specially designed side reflectors with highly reflective textured paint, the luminaires have a high specific luminous flux (till 122 lm/W). The LLMF is still 92% after 50.000 burning hours.



- Baby daycare center: 9 x 9 m
- 9 x US3141/LEDN40S
- $UGR \leq 22$
- 351 lux
- 1.17 W / m<sup>2</sup> / 100 lux



- Classroom: 9 x 9 m
- 16 x US3141/LEDN20S
- $UGR \leq 19$
- 335 lux
- 1.12 W / m<sup>2</sup> / 100 lux

# US3 | Widely applicable



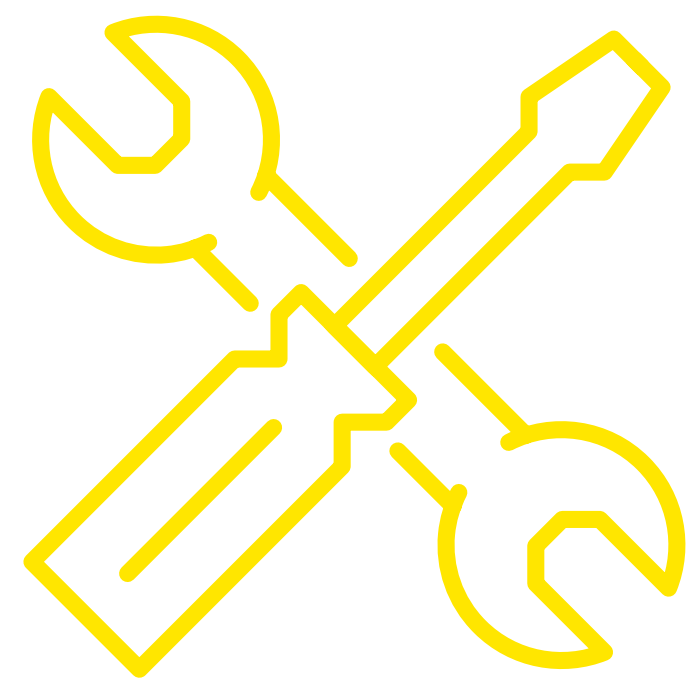
US3 luminaires are available in versions for 300 lux and 500 lux applications, each time in warm white (3000K) and cold white (4000K).

On demand, the luminaires can be adjusted (eg. integrated daylight sensor ELS, emergency unit, ...).

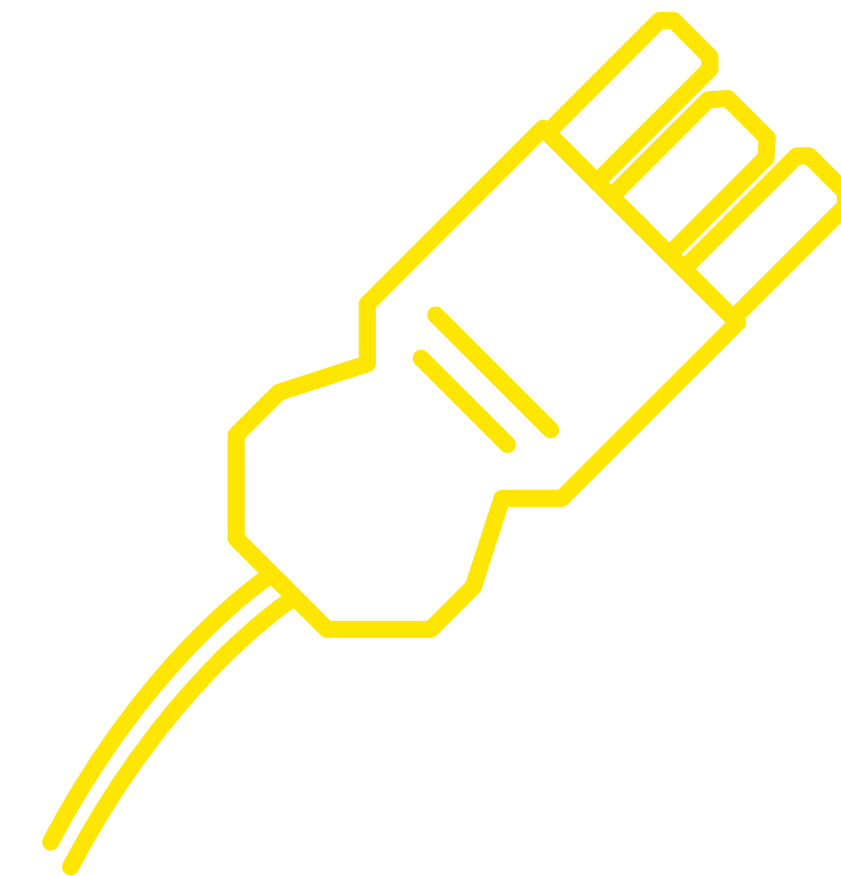








The luminaires are easy to install in system ceilings (M300 / M600).  
For plaster-board ceilings an adapted mounting frame is available.



Plug and play connection with a Wieland plug.



The optic forms a whole and is easy to clean.



US3

